

Grade 6 theory model answer paper

for May 2013



Introduction and notes

This answer paper has been created to demonstrate the correct answers, or those which would attract the highest marks. Where it is possible to give an exact answer, this has been done. Where there are multiple correct answers, these may also be given. Where an answer is open ended and/or creative, then an indicative answer has been given to show the type of response that is expected.

Trinity College London reserves the right to alter the content of this publication at any time.

All syllabuses and further information about Trinity College London can be obtained from:

Trinity College London
89 Albert Embankment
London SE17TP UK

T +44 (0)20 7820 6100
F +44 (0)20 7820 6161
E music@trinitycollege.co.uk
www.trinitycollege.co.uk

© Trinity College London 2013

Theory of Music Grade 6

May 2013

Your full name (as on appointment slip). Please use BLOCK CAPITALS.

Your signature

Registration number

Centre

Instructions to Candidates

1. The time allowed for answering this paper is **three (3) hours**.
2. Fill in your name and the registration number printed on your appointment slip in the appropriate spaces on this paper, and on any other sheets that you use.
3. **Do not open this paper until you are told to do so.**
4. This paper contains **seven (7) sections** and you should answer all of them.
5. Read each question carefully before answering it. Your answers must be written legibly in the spaces provided.
6. You are reminded that you are bound by the regulations for written examinations displayed at the examination centre and listed on page 4 of the current edition of the written examinations syllabus. In particular, you are reminded that you are not allowed to bring books, music or papers into the examination room. Bags must be left at the back of the room under the supervision of the invigilator.
7. If you leave the examination room you will not be allowed to return.

Examiner's use only:

1 (10)	
2 (15)	
3 (15)	
4 (15)	
5 (10)	
6 (15)	
7 (20)	
Total	

Section 1 (10 marks)

Boxes for
examiner's
use only

1.1 Which two scales have four flats as their key signature? Ab major and F minor

1.2 What is the subdominant note of the scale of D melodic minor? G

1.3 Write the correct Roman numeral for a dominant chord in first inversion. V⁷b

1.4 On the staves below, using the correct key signature, write a plagal cadence in the key of C minor:

1.5 Identify the following chord in C minor by writing the appropriate Roman numeral beneath it.

1.6 Add appropriate accidentals to make the following scale G harmonic minor.

1.7 Name the following interval:

Minor 10th (or compound minor 3rd)

1.8 What does **arco** mean? With the bow

Boxes for
examiner's
use only

1.9 Write the metronome mark which indicates a tempo of 112 dotted minim beats per minute.

♩. = 112

1.10 What interval is the inversion of a perfect fourth? Perfect 5th

Section 2 (15 marks)

2.1 Write the following one-octave scale in a rhythm to fit the given time signature. Use rests between some degrees of the scale, and use the correct key signature.

F# melodic minor, ascending then descending.

2.2 Write the one-octave blues scale on E, ascending and descending in a rhythm to fit the given time signature. Do not use a key signature, but write in the necessary accidentals.

2.3 Transpose the following so that clarinets in Bb will be able to play it at the same pitch as the following notes. Use the appropriate key signature.

Verdi

Section 3 (15 marks)

Boxes for
examiner's
use only

3.1 Write an 8-bar melody in C minor for viola. You may use the following as a start if you wish:

Moderato

There are many possible answers.
This response would attract full marks.

Moderato

5

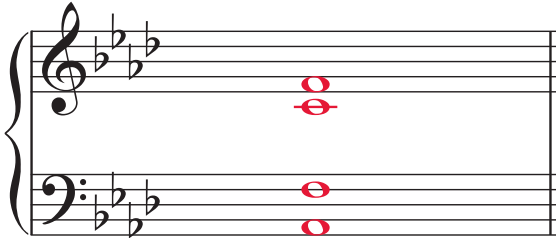
Section 4 (15 marks)

4.1 Make a harmonic sequence by repeating this chord progression one note lower each time to complete the phrase.

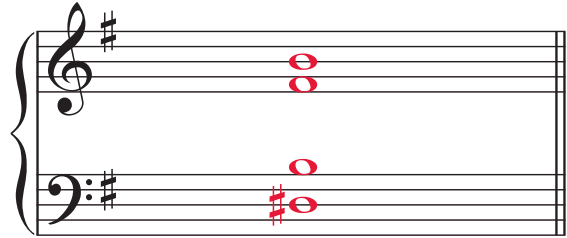
Section 5 (10 marks)

Boxes for
examiner's
use only

5.1 Using semibreves, write out 4-part chords for SATB using the chords shown by the Roman numerals. Double the root in each case.



(Ab major) vib



(E minor) Vb



Section 6 (15 marks)

6.1 Label the chords of this phrase with Roman numerals below the staff and chord symbols above, and complete it with an appropriate cadence.

Gauntlett

C F F C/E G⁷/D C C G Am C/G

I IV IV Ib V⁷c I I V vi Ic



(Please turn over for section 7)

Section 7 (20 marks)

Look at the following movement and answer the questions opposite.

Carcassi

Vivace

f **V7^b**

6

11

16

21 *p* *f*

26 *p*

E7/G[#]

31 *f* *p*

36 *f* *p*

- 7.1 In which key does this extract open? G major
- 7.2 What is the key of the music in bars 9–10? A minor
- 7.3 What type of cadence occurs in bars 7–8? Perfect
- 7.4 On the music draw a circle around the passing notes in bars 3–4.
- 7.5 Write the appropriate Roman numeral beneath bar 5.
- 7.6 Write the appropriate chord symbol above bar 35.
- 7.7 Give the number of any bar which contains the lowest note playable on the classical guitar.
Any of bars 21, 22, 23, 24
- 7.8 What is the key in bars 17–18? E minor
- 7.9 Which eight bars contain two four-bar sequences? 33–40
- 7.10 What do you notice about the rhythm in bars 17–23? The effect is that of continuous semiquavers

Boxes for
examiner's
use only